

Forest data availability in the member states and its current use at the EU level?

Klemens Schadauer representing ENFIN

BFW - Department of Forest Inventory Austria

Forest-related reporting at the EU level – what we know and what's missing?

Brussels

10th October 2023

NFIs in Europe - ENFIN

European National Forest Inventory Network (ENFIN). The members supply **forest data and information** at national and sub-national levels for up to 100 years.



Strong Expertise

NFIs within EU

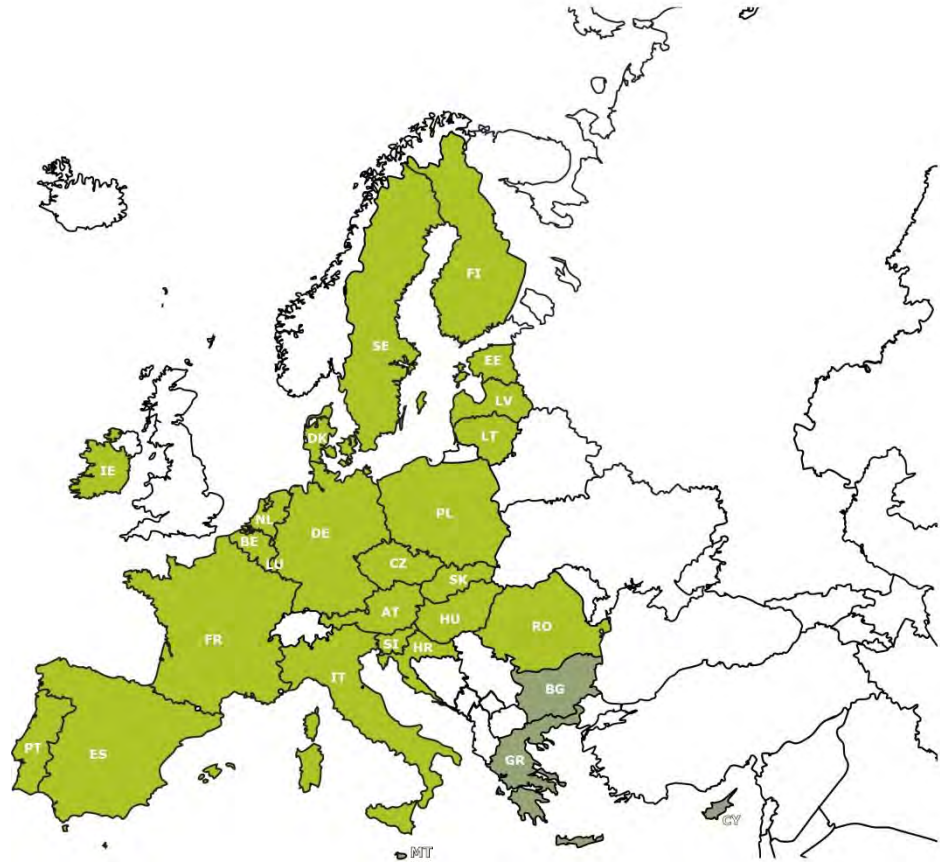
Covering 95% of the EU forest area
Covering 97% of the EU growing stock

Established
sample based NFIs



NFIs within EU

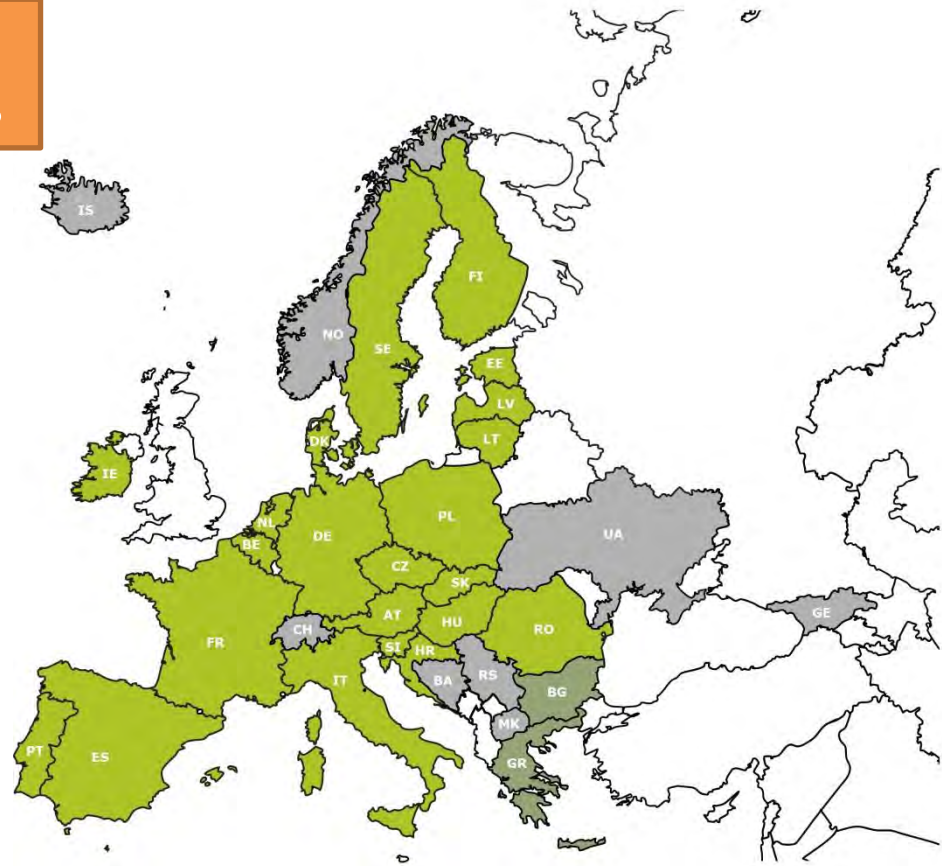
- Established sample based NFIs
- Other forest information



NFIs in Europe - ENFIN

Brings together 31 European countries

- Established sample based NFIs
- Other forest information
- Additional ENFIN Members



NFIs at the national level

- Statistical estimation and information
- Continuous matching with upcoming forest (related) policies

⇒ how NFI information can serve the decision situation

Megatrends

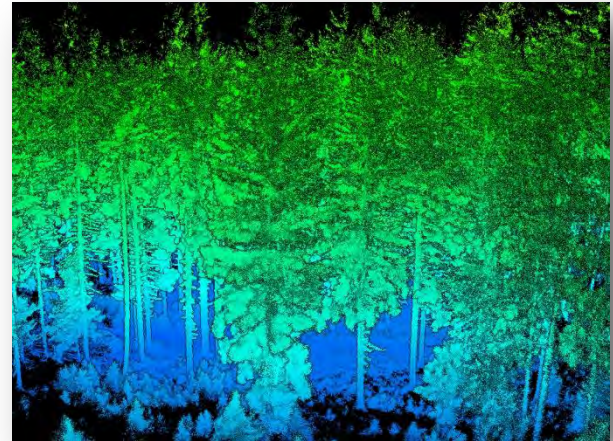
Biodiversity loss
Climate change



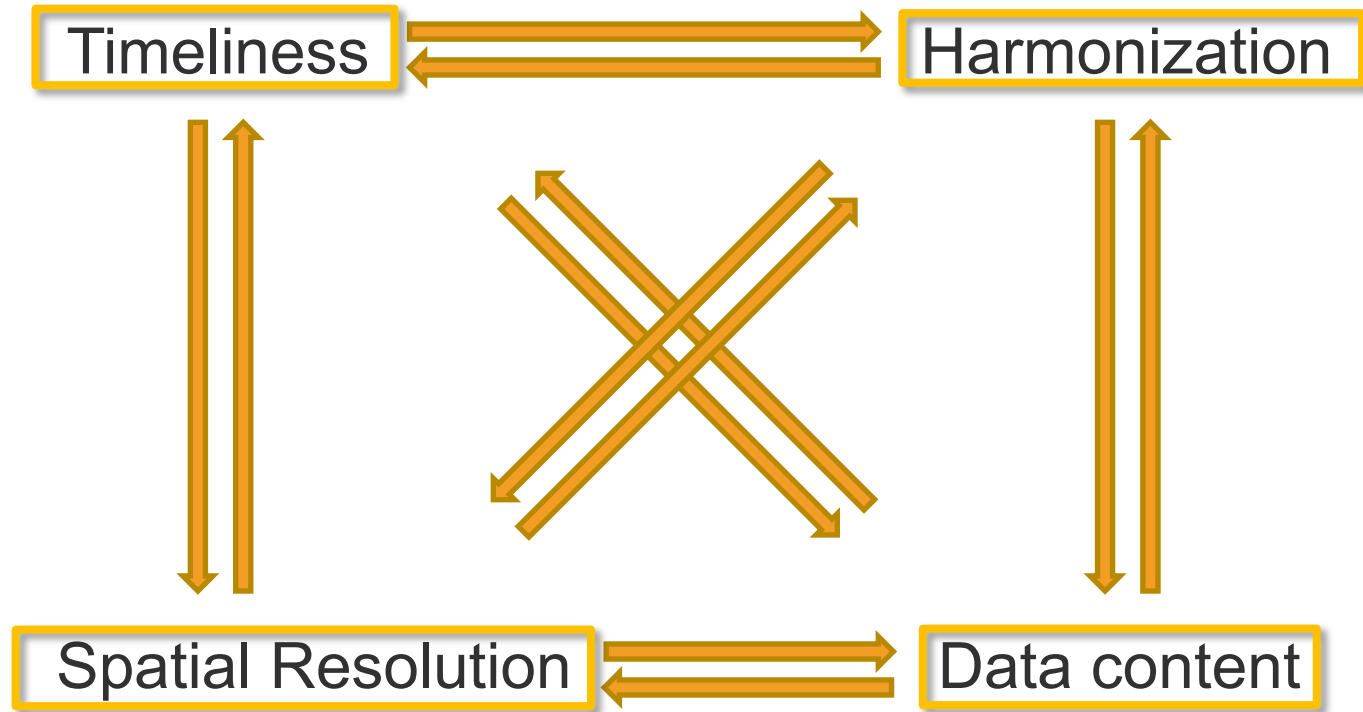
Phasing out fossil materials
Increased forest damages



Monitoring fit for purpose?
Improved Forest Monitoring



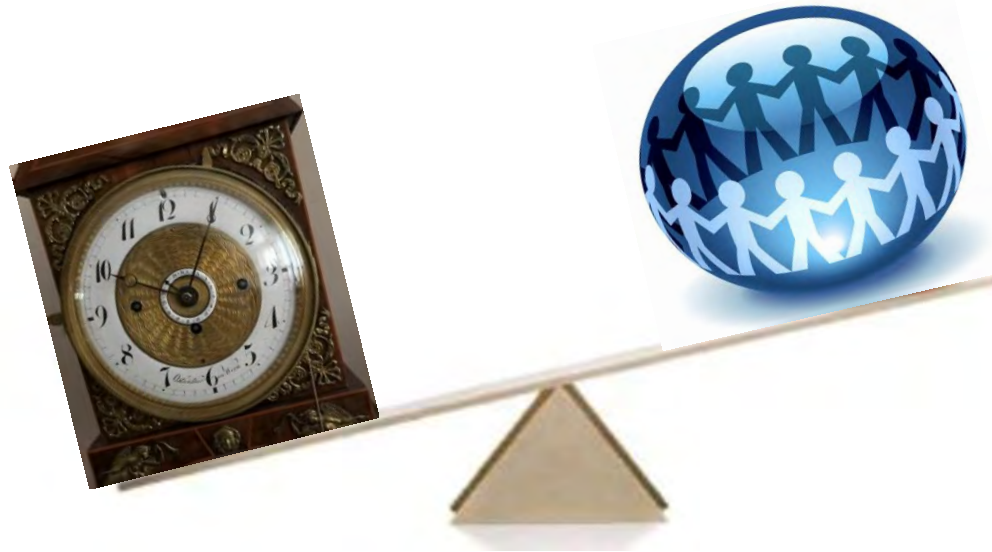
What is relevant for a European system?



Possible ways of working

Timeliness

Harmonization



Trade-off

Possible ways of working

Timeliness



Harmonization



Right Balance

ENFINs Harmonization Work

- Forest Area with Forest Available for Wood Supply:
SCs with JRC <https://doi.org/10.1016/j.forpol.2019.102032>
- Above Ground Biomass:
SCs with JRC: reports, publication about mapping
DOI: [10.2760/311876](https://doi.org/10.2760/311876)
- Growing stock and Stem Volume:
H2020-Diablo: <https://doi.org/10.1016/j.foreco.2021.119868>,
doi.org/10.1007/s13595-019-0800-8
- Increment:
SCs with JRC: reports, publication is ongoing
- Sound statistic estimation on the European level

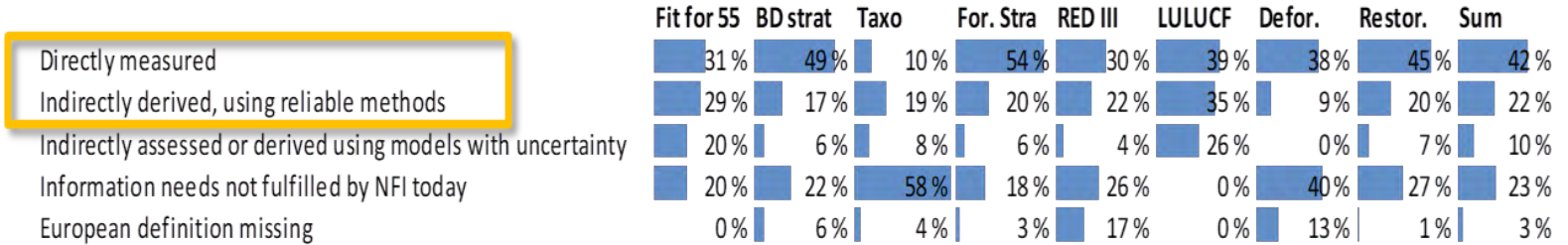
⇒ So far not really used for reporting!



NFIs as Backbone for EU Forest Reporting

NFIs supporting EU Forest Policies:

based on Interviews with Commission Experts and on a
Questionnaire



⇒ 2/3 of EU policy data needs directly measured in NFIs or derived from NFI variables

Possible ways of working

Spatial Resolution

Data Content



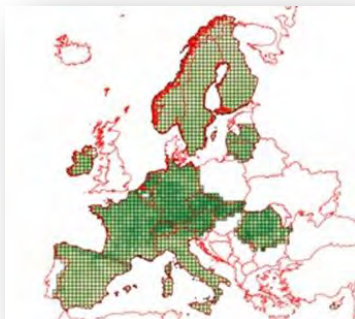
Trade-offs

Possible ways of working

Spatial Resolution

Data Content

Raster
NUTS



**Owner
ship**

General Data
Protection
Regulation

Right Balance ?

Possible ways of working

Spatial Resolution

Resolution in Time



Trade-offs

Possible ways of working

Spatial Resolution

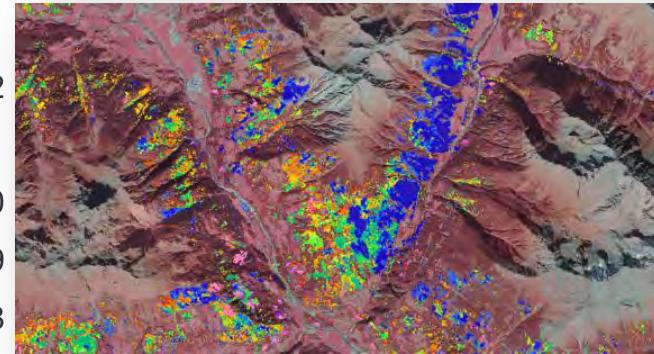
Resolution in Time



Right Balance ?

Main Goals for improved Forest Monitoring

- Measuring the success of established policies
- Timely damage monitoring
- Creating scenarios for future forests



ENFINs proposed Tools for a Solution

- Harmonisation of existing systems
- Developing new indicators
- European estimation platform and procedures to derive European Forest Information
- Facilitating European Remote Sensing



European National Forest Inventory Network

Information on forests - sound and comprehensive

Thank you very much!



National Forest Inventories (NFIs) represent comprehensive, reliable, large-scale monitoring systems. ENFIN serves as a European network to promote NFIs, harmonise forest information and support decision makers in a broad range of forest related policies.

The overall objectives of ENFIN are to

- provide a platform for the harmonisation of forest inventory information at European scale
- optimise synergies between NFIs and promote new knowledge and enhanced methods
- support forest policies with harmonised forest information and adapt data collection to new emerging policy needs.