



# MANAGING STATE FORESTS IN EUROPE





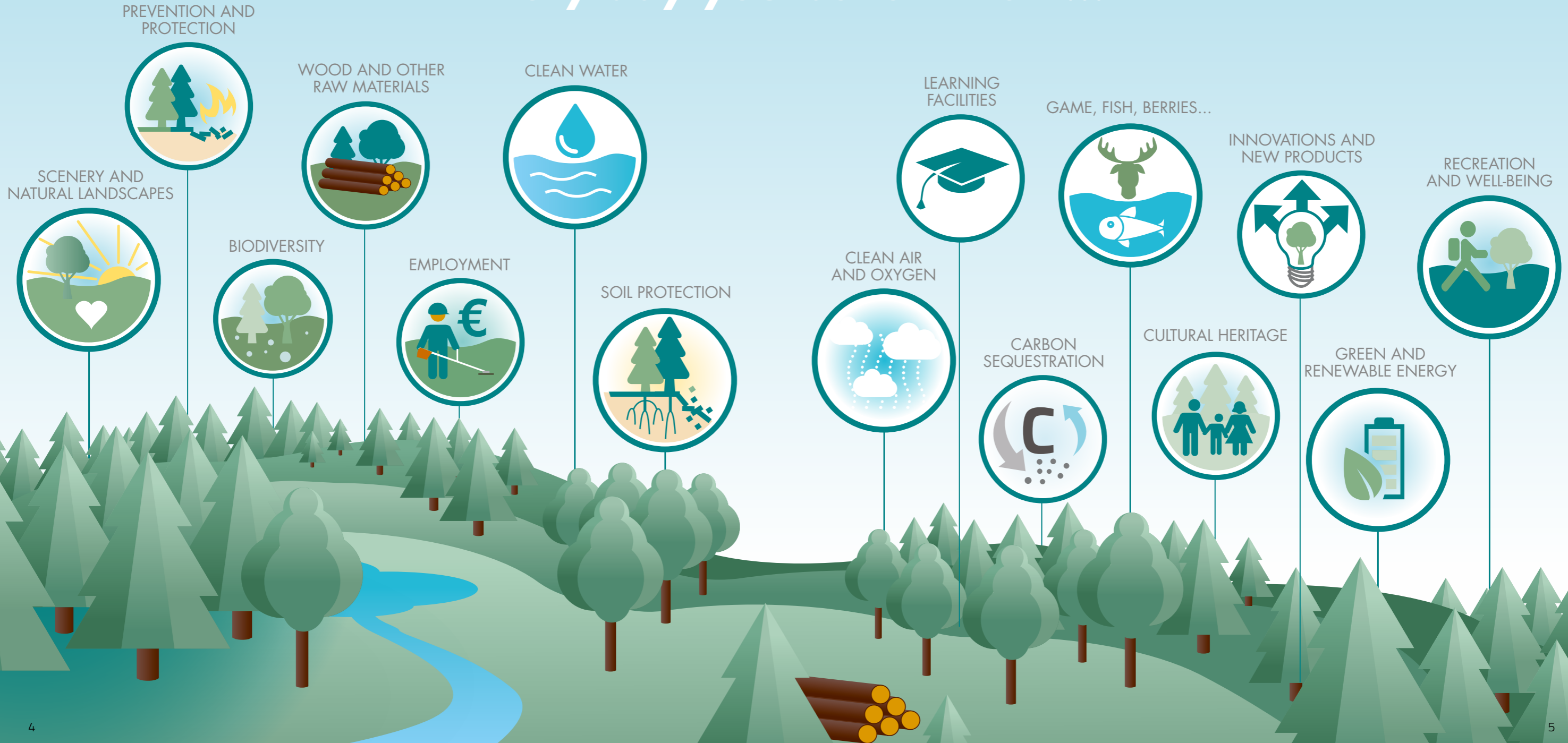
*Copyright © 2016 European State Forest Association. All rights reserved.  
This brochure is printed on certified paper from sustainably managed sources.*

# MANAGING **STATE FORESTS** IN EUROPE

European State Forest Management Organisations (SFMOs) are dynamic and capably managed entities, charged by European governments to effectively manage forest ecosystems – one of Europe’s greatest natural resources – for the benefit of society at large. As those who are actually responsible for making sustainable forest management (SFM) happen, SFMOs maintain an interface with the resource owners (states/governments), the citizens of Europe, the forest-based industries and all other stakeholders affected by forest management.

European SFMOs face a wide variety of challenges of a political, institutional and – very often – financial nature. It is therefore important that all opportunities, challenges, limitations and restrictions faced by state forestry are taken into account when further designing policies relevant to forests. Doing this not only at EU level, but also at national and international levels, will result in even further benefits for all Europeans.

# Every day you benefit from...





# EUROPEAN STATE FOREST ASSOCIATION

The European State Forest Association (EUSTAfor) represents commercially-oriented state forest companies, enterprises and agencies that have sustainable forest management (SFM) and sustainable wood production as major concerns. The Association currently has 30 members in 22 European countries.

EUSTAfor's members represent one third of the European Union's forest area, including the management of 8,3 million hectares of protected forests and 7,9 million hectares of forests designated as Natura 2000 areas. Most of their forests have been certified according to FSC or PEFC standards, or both. Their combined annual harvest amounts to approximately 120 million m<sup>3</sup> of round timber and together the member organisations provide employment for around 100 000 people. Only 60-70 % of the annual growth of state forests is harvested, thereby ensuring their increasing development over time.

The overall goal of EUSTAfor is to support and strengthen state forest management organisations throughout Europe, helping them to maintain and enhance their economically

viable, socially beneficial, culturally valuable and ecologically responsible sustainable forest management.

In addition to duly informing its member organisations on EU topics and issues that are of concern to them, EUSTAfor promotes the exchange of know-how and day-to-day field experiences between individual members. Not only does this facilitate the future development of sustainable and multifunctional forest management models, but it allows for the identification of common positions and experiences, especially as concerns the implementation of European legislation and political strategies related to forests.

Based on this knowledge, EUSTAfor has become a capable partner in dialogues with the EU institutions and stakeholders of the forest-based sector. By providing practical and comprehensive feedback to the EU's decisional bodies and participating in policy developments at international level, EUSTAfor is able to make a key contribution to legal and strategic decisions concerning the sustainable development of Europe's forests.

# OUR STATE FORESTS DELIVER

European State Forest Management Organisations adhere to the principles of sustainable forest management (SFM) based on the following three pillars:

## 1) ECONOMIC VALUE

- Acting as a cornerstone of Europe's bio-economy, producing over 1/3 of the EU's timber harvest
- Creating and maintaining economic prosperity and jobs, especially in Europe's rural areas
- Serving as reliable partners for research and innovation in the forest-based sector
- Leading the way in providing the necessary conditions for Europe to move towards a bio-based green economy

## 2) ENVIRONMENTAL VALUE

- Acting as forerunners in the use and development of ecologically sound silvicultural methods of sustainable forest management that allow forest ecosystems to adapt to climate change

- Maintaining a home for biodiversity and protecting endangered species through the management of most of Europe's Natura 2000 network and other protected areas
- Helping to regulate and control changes in the climate by providing carbon sinks and carbon-neutral raw materials
- Supporting fundamental natural processes such as nutrient and water cycles and protecting the soil
- Maintaining forest infrastructures to make them resilient to diseases, flooding, erosion and fire hazards

## 3) SOCIAL VALUE

- Offering a significant number of ecosystem services and other non-material benefits for the general well-being of all Europeans
- Provisioning of clean air and water supplies
- Creating and maintaining recreational areas open to the general public for hiking, wildlife observation and other outdoor activities
- Maintaining scenic and natural heritage areas of cultural value
- Provisioning of wild food and game

# Wood is all around you!



## EUSTAFOR MEMBERS

### AUSTRIA

**Österreichische Bundesforste AG**  
Pummergeasse 10 - 12  
3002 Purkersdorf, Austria  
[www.bundesforste.at](http://www.bundesforste.at)

### BELGIUM

**Natuurinvest**  
Graaf de Ferrarisgebouw  
Koning Albert II-laan 20 bus 22  
1000 Brussels, Belgium  
[www.natuurinvest.be](http://www.natuurinvest.be)

### BOSNIA & HERZEGOVINA

**ŠGD "Hercegbosanske Šume" d.o.o.**  
Splitska bb  
80320 Kupres, Bosnia & Herzegovina  
[www.hbsume.ba](http://www.hbsume.ba)

### BULGARIA

**Министерство на земеделието и храните**  
**Ministry of Agriculture and Food**  
State Forest Enterprises Department  
Hristo Botev Blvd.55  
1040 Sofia, Bulgaria

#### Six Bulgarian State Forest Organisations

Southwest: [www.uzdp.bg](http://www.uzdp.bg)  
Southcentral: [www.ucdp-smolian.com](http://www.ucdp-smolian.com)  
Southeast: [www.uidp-sliven.com](http://www.uidp-sliven.com)  
Northwest: [www.szdp.bg](http://www.szdp.bg)  
Northcentral: [www.scdp.bg](http://www.scdp.bg)  
Northeast: [www.dpshumen.bg](http://www.dpshumen.bg)

### CROATIA

**Hrvatske Šume d.o.o.**  
Ljudevita Farkaša Vukotinovića 2  
10000 Zagreb, Croatia  
[www.hrsume.hr](http://www.hrsume.hr)

### CZECH REPUBLIC

**Lesy České republiky, s. p.**  
Přemyslova 1106  
50168 Hradec Králové, Czech Republic  
[www.lesy.cz](http://www.lesy.cz)

### ESTONIA

**Riigimetsa Majandamise Keskus (RMK)**  
Toompuiestee 24  
10149 Tallinn, Estonia  
[www.rmk.ee](http://www.rmk.ee)

### FINLAND

**Metsähallitus**  
Vernissakatu 4  
01300 Vantaa, Finland  
[www.metsa.fi](http://www.metsa.fi)

### FRANCE

**Office National des Forêts (ONF)**  
Avenue de Saint-Mandé 2  
75570 Paris Cedex 12, France  
[www.onf.fr](http://www.onf.fr)

### GERMANY

**Bayerische Staatsforsten AöR**  
Tillystraße 2  
93053 Regensburg, Germany  
[www.baysf.de](http://www.baysf.de)

### Landesbetrieb ForstBW

Kernerplatz 10  
70182 Stuttgart, Germany  
[www.forstbw.de](http://www.forstbw.de)

### Landesbetrieb Forst Brandenburg

Zeppelinstraße 136  
14471 Potsdam, Germany  
[www.forst.brandenburg.de](http://www.forst.brandenburg.de)

### Landesforst Mecklenburg-Vorpommern AöR

Fritz-Reuter-Platz 9  
17139 Malchin, Germany  
[www.wald-mv.de](http://www.wald-mv.de)

### Niedersächsische Landesforsten

Husarenstraße 75  
38102 Braunschweig, Germany  
[www.landeforsten.de](http://www.landeforsten.de)

### Landesforstbetrieb Sachsen-Anhalt

Lennéstraße 6  
39112 Magdeburg, Germany  
[www.landeforstbetrieb.sachsen-anhalt.de](http://www.landeforstbetrieb.sachsen-anhalt.de)

### ThüringenForst AöR

Hallesche Straße 16  
99085 Erfurt, Germany  
[www.thueringenforst.de](http://www.thueringenforst.de)

### HUNGARY

**Földművelésügyi Minisztérium**  
Kossuth Lajos tér 11  
1055 Budapest, Hungary  
[www.kormany.hu/en/ministry-of-agriculture](http://www.kormany.hu/en/ministry-of-agriculture)

### IRELAND

**Coillte**  
Dublin Road  
Newtownmountkennedy  
Co. Wicklow, Ireland  
[www.coillte.ie](http://www.coillte.ie)

### ITALY

**Associazione Nazionale delle Attività Regionali Forestali (ANARF)**  
c/o Veneto Agricoltura  
Viale dell'Università, 14  
35020 Legnaro (PD), Italy  
[www.anarf.org](http://www.anarf.org)

### LATVIA

**Latvijas valsts meži (LVM)**  
Vaiņodes Street 1  
1004 Riga, Latvia  
[www.lvm.lv](http://www.lvm.lv)

### LITHUANIA

**Generalinė miškų urėdija**  
Aplinkos ministerijos  
A. Juozapavičiaus str. 9  
09311 Vilnius, Lithuania  
[www.gmu.lt](http://www.gmu.lt)

### NORWAY

**Statskog**  
Søren R. Thornæs vei 10  
7800 Namsos, Norway  
[www.statskog.no](http://www.statskog.no)

### POLAND

**Państwowe Gospodarstwo Leśne LASY PAŃSTWOWE**  
Dyrekcja Generalna Lasów Państwowych  
ul. Grójecka nr 127  
02-124 Warsaw, Poland  
[www.lasy.gov.pl](http://www.lasy.gov.pl)

### ROMANIA

**ROMSILVA**  
Soseaua Petricani, nr. 9A, sectorul 2  
023841 Bucharest, Romania  
[www.rosilva.ro](http://www.rosilva.ro)

### SLOVAKIA

**LESY Slovenskej republiky, š. p.**  
Námestie SNP 8  
975 66 Banská Bystrica, Slovak Republic  
[www.lesy.sk](http://www.lesy.sk)

### SLOVENIA

**Sklad kmetijskih zemljišč in gozdov Republike Slovenije**  
Dunajska cesta 58  
1000 Ljubljana, Slovenia  
[www.s-kzg.si](http://www.s-kzg.si)

### SWEDEN

**Sveaskog AB**  
Torsgatan 4  
10522 Stockholm, Sweden  
[www.sveaskog.se](http://www.sveaskog.se)

### UNITED KINGDOM

**Forest Enterprise England (Forestry Commission)**  
620 Bristol Business Park  
Coldharbour Lane  
BS16 1EJ Bristol, England (UK)  
[www.forestry.gov.uk](http://www.forestry.gov.uk)

### Forest Enterprise Scotland (Forestry Commission)

1 Highlander Way  
IV2 7GB Inverness, Scotland (UK)  
[www.forestry.gov.uk](http://www.forestry.gov.uk)

### Natural Resources Wales

Government Buildings  
Rhodfa Padarn  
Llanbadarn Fawr  
SY23 3UR Aberystwyth Ceredigion, Wales (UK)  
[www.naturalresourceswales.gov.uk](http://www.naturalresourceswales.gov.uk)



Broad Leaf

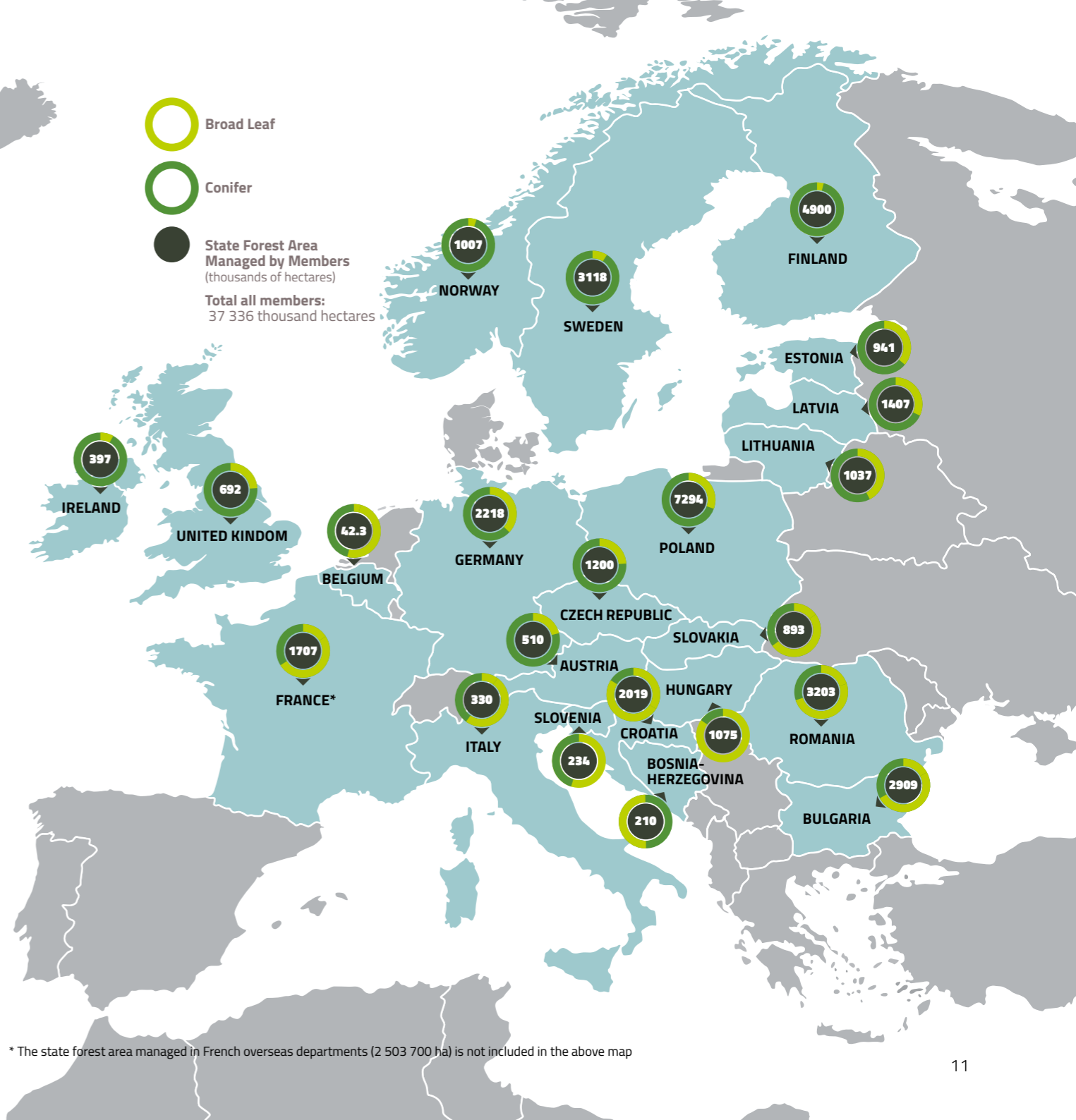


Conifer



State Forest Area  
Managed by Members  
(thousands of hectares)

Total all members:  
37 336 thousand hectares



\* The state forest area managed in French overseas departments (2 503 700 ha) is not included in the above map



**European State Forest Association**

European Forestry House

Rue du Luxembourg 66 | 1000 Brussels, Belgium

Telephone: +32 (0)2 239 23 00 | FAX: +32 (0)2 219 21 91

Email: [office@eustafor.eu](mailto:office@eustafor.eu)

[www.eustafor.eu](http://www.eustafor.eu)